

QUORUM TOUCH

Live and recorded IP Video displayed at your fingertips

An IP touch-screen application that manages live and recorded edge-to-edge video at the touch of a button. Whether hard-wired or Wi-fi, MPEG4, MJPEG or H.264, Quorum Touch is the latest development in point and play CCTV applications.

■ Key Benefits

- User-friendly touch-sensitive control.
- Simple installation and configuration.
- Contains an integrated Networked Video Recorder.
- Displays live and recorded video streams from major manufacturers' IP devices simultaneously.
- Supports multiple video formats, including H.264, MPEG4, MxPEG and Motion JPEG.
- Scales video according to selected screen layout.
- PTZ control: support for both legacy and emerging IP-based protocols
- Built-in web-browser allows remote control and configuration of displayed cameras.
- Offers several screen layout options.



PTZ control: support for both legacy and emerging IP-based protocols

■ Recorded Video

View live and recorded video simultaneously. Recordings are stored on the integrated NVR.

Use the Touch timeline to:

- Scroll backwards and forwards.
- Pause and step through frame by frame.
- Take snapshots.
- Export entire or partial recordings.



System Configuration

- Event-Driven Mode: Start playing video in an available pane when a motion event occurs.
- Video Overlay: Display the camera name in the top left corner of the video pane.
- Maintain Aspect Ratio: Keep the correct aspect ratio of video, even when the video panes stretch to fill the screen.



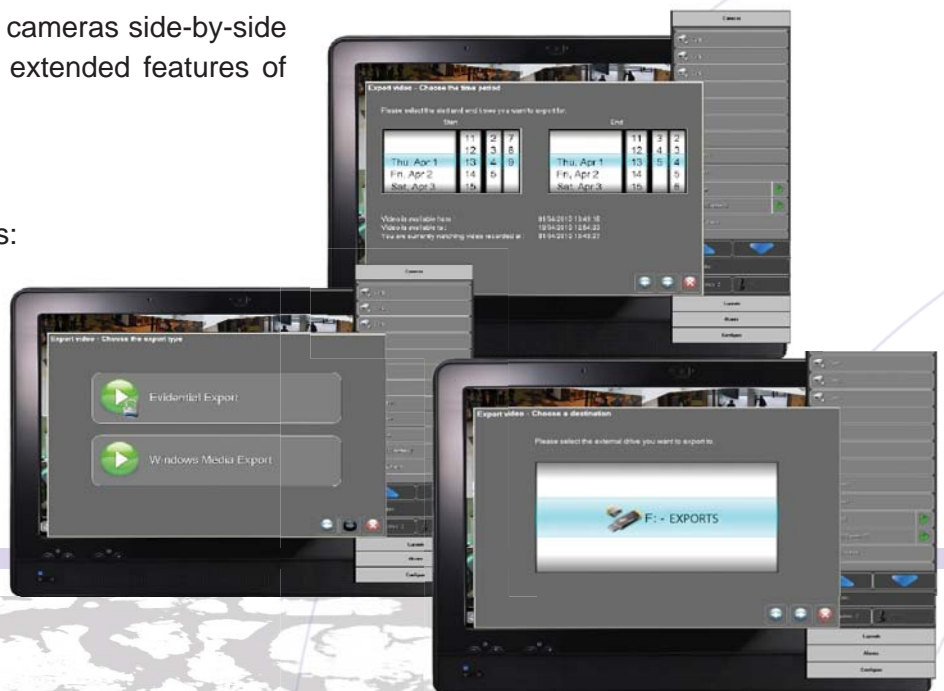
Pan-Tilt-Zoom

- Support for legacy PTZ protocols such as Pelco-P and for emerging IP based protocols such as Bicom IP and Pelco IP, providing hybrid PTZ control.
- Operate IP- and serial-based PTZ cameras side-by-side without limiting the access to the extended features of individual manufacturers' devices.

Export Wizard

Three easy steps to export recordings:

- Select the start and end of the video you want to export.
- Choose native format for court evidence, or Windows Media format for use with Windows Media Player.
- Select an external drive where the recording will be stored.



Product Specification

- Workstation, architecture 32bit or 64bit
- CPU 2.2 GHz, or greater, for example, Intel® Dual Core Processor T4300
- HDD 500GB or greater - SATAII.
- Drive for OS and recordings with sufficient space to satisfy storage requirements.
- RAM 3GB DDR2
- Network card 1000 Base-T full duplex.
- Graphic card: high performance graphic system with Direct Draw hardware acceleration and Direct 3D hardware acceleration.

Example Applications

- Retail: Customers can clearly see that the premises are monitored.
- Garage outlets and petrol stations: Staff have easy view of forecourt.
- Office: Receptionists can monitor secure areas without leaving their desks.
- Home security: Use Wi-fi to view video from any room in the house.