



QUORUM DESIGN

Creates mapsets which provide easy visualisation of the surveillance site

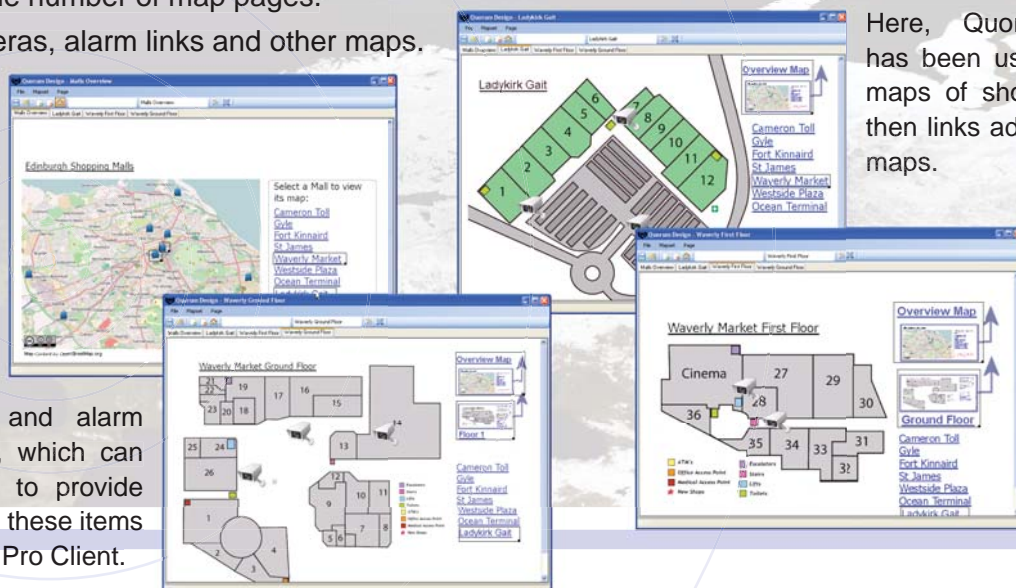
A mapset is similar to a mini-website; it is a collection of interconnected pages or “maps” that contain links to various surveillance system components, such as cameras, Networked DVRs and alarm sources.

Quorum Design forms part of the Quorum Pro suite of products, and is a self-contained mapset creation application which works in conjunction with Quorum Pro Client, Quorum Server and Quorum Site to provide a visual representation of the areas to be monitored.

■ Key Benefits

- Easy installation and operation - highly visual interface.
- Provides an alternative to creating mapsets by hand, a time-consuming process and prone to error if XHTML is unfamiliar to the author.
- Provides operators with an alternative view to the branched tree representation of system components.
- No need to know how to create web pages using XHTML in a text editor.
- No limit to the number of map pages.
- Link to cameras, alarm links and other maps.

Add camera and alarm links to maps, which can then be used to provide easy access to these items in the Quorum Pro Client.



Here, Quorum Design has been used to create maps of shopping malls, then links added between maps.

■ PC Specification

- The computer used to run Quorum Design can be considered to be a general purpose PC, i.e. it can be used for tasks other than mapset designing.
- Workstation grade, 32- or 64-bit architecture, single processor or multi-processor based personal computer.
- 1.0 GHz, or higher CPU speed.
- 1 GB of memory.
- 50GB of hard drive space for operating system .Net Framework and Designer software.
- 100-Base T network card configured for full duplex.
- Business grade graphics adaptor.
- 32-bit operating system, eg Windows XP Professional – service pack 3, or greater.
- Microsoft .Net Framework 3.5 — automatically downloaded from Microsoft if not present at install time.
- Microsoft Windows Installer 3.1 or above.