



UORUM PRO

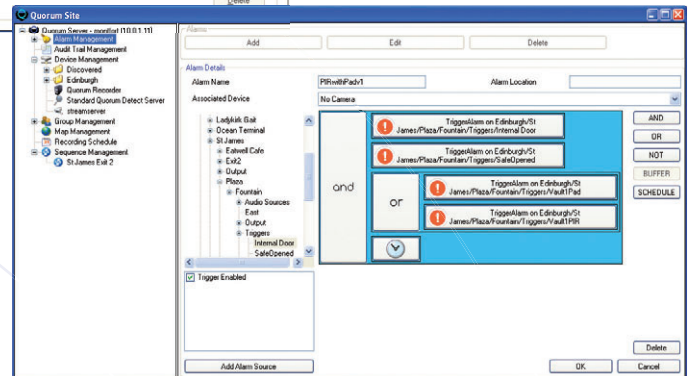
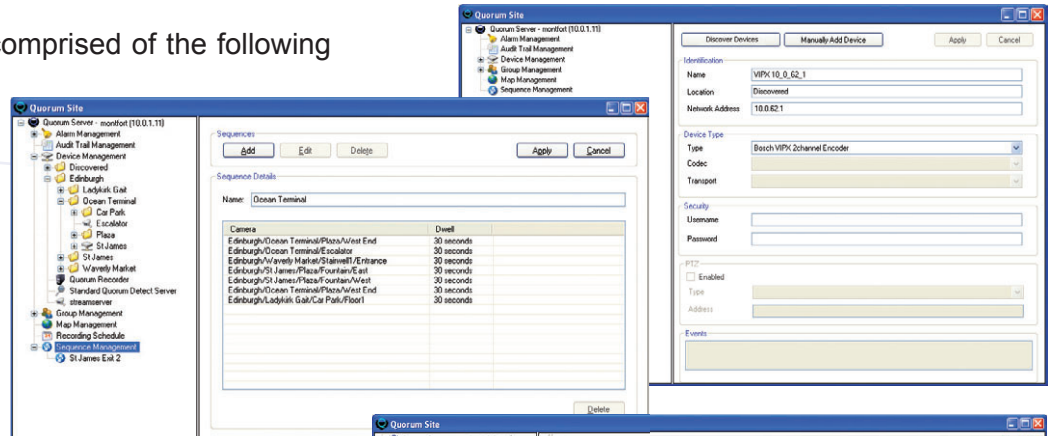
Powerful, all-inclusive video management suite

The Quorum Pro suite is comprised of the following components:

- Quorum Site
- Quorum Server
- Quorum Pro Client
- Quorum NVR
- Quorum Design

■ Quorum Site

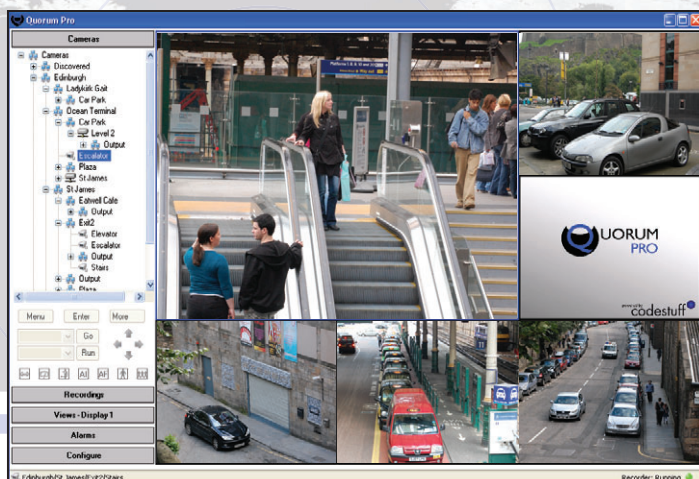
- Configuration and administration tool for the Quorum Pro suite.
- Configure many servers and copy configuration between them.
- Straightforward management of users, user groups, devices (including PTZ cameras), alarms, triggers, sequences and recording jobs.
- Configurable audit trail maintains a record of all user and system activity.



The Quorum Site application

■ Quorum Pro Client

- The viewing and playback element of the Quorum Pro suite.
- View live and recorded video simultaneously.



The Quorum Pro Client application

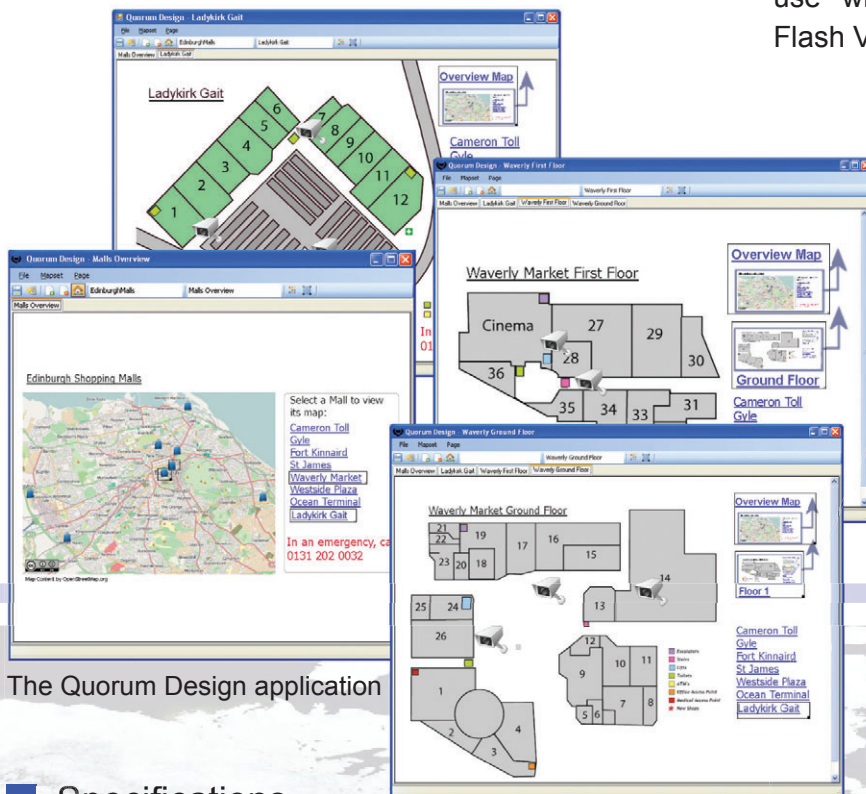
- View, play back and monitor alarms originating from surveillance resources such as IP cameras, networked digital video recorders (DVRs), NVRs and Video-walls.
- Industry standard viewing layouts such as single, quad, 4 by 3, spot plus cameos, etc.
- Use of maps allows users to quickly visualise where cameras throughout the site are located, aiding incident response.
- Install Quorum Pro Client on a remote PC to view live cameras and recordings using low bandwidth transcoded streams.
- Supports up to four heads, providing more real estate for viewing live and recorded video, reviewing alarms, audit information and maps.
- Export recordings in native format for court evidence - or transcoded to other formats for use with standard players.

■ Quorum Server

- Quorum Server provides device, alarm and user management, authentication, HTML map serving, remote control interface, transcoding and, on some versions, analytics.
- Contains an integrated Networked Video Recorder.
- Monitors for events on various IP cameras and NVRs, raising alarms on those clients permitted to receive events.
- Controls access by computers executing the Quorum Pro client to surveillance resources such as IP cameras, networked digital video recorders (DVRs), NVRs and Video-walls.
- Configured and managed using the Quorum Site application.

■ Quorum NVR

- Standalone Networked Video Recorder which can record and play back up to 32 streams simultaneously.
- Adds extra recording capacity to the surveillance system.
- Records media streams – primarily video feeds – from surveillance resources such as encoders and IP cameras.
- Recording duties controlled by various “jobs” held in an SQL database.
- Jobs may specify continuous (24/7), time-scheduled, or alarm-based recording, with configurable pre- and post-alarm values.
- Export recordings in native format for court evidence - or transcoded to other formats for use with standard players e.g. QuickTime, Flash Video Player or Windows Media Player.



The Quorum Design application

■ Quorum Design

- Mapset creation tool which builds a series of interconnected pages or “maps” that contain links to various surveillance system components.
- Works in conjunction with Quorum Site and Quorum Pro Client to provide an alternative view to the hierarchical, branched tree representation of system components.

■ Specifications

A typical Quorum Pro Client PC requires:

- Processor: 32- or 64-bit architecture using 32-bit OS.
- Memory: 2048MB (minimum).
- 100 Base-T network card (minimum) configured for full duplex.
- A high performance graphic system with Direct Draw hardware acceleration and Direct 3D hardware acceleration.
- 32-bit operating system, such as Windows XP Professional, service pack 3, or greater.

A typical Quorum Server PC requires:

- Processor: 32- or 64-bit architecture using 32 bit OS.
- Memory: 4096MB.
- 1000 Base-T network card configured for full duplex.
- Hard Drive/Storage - 500GB SATA Hard Drive (or other very high performance drive)
- Uninterruptable Power Supply (UPS) system.
- 32-bit operating system, such as Windows XP Professional, service pack 3, or greater.